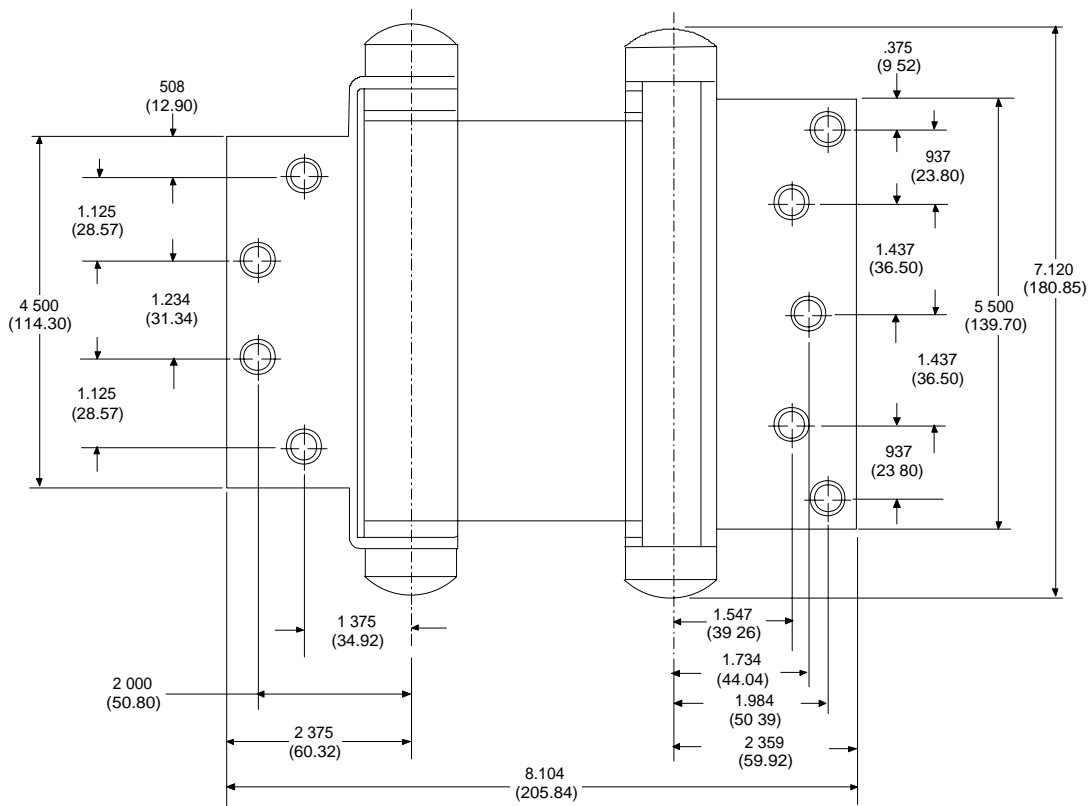
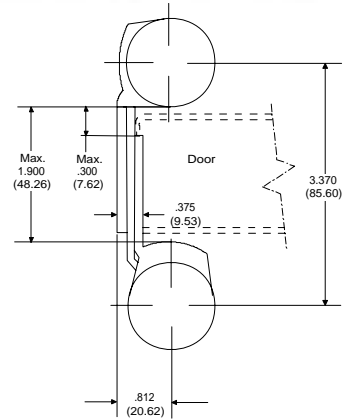
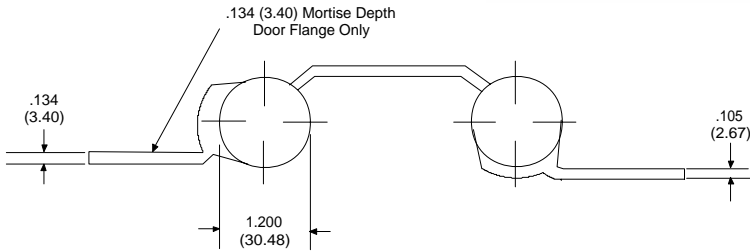




FULL MORTISE DOUBLE ACTING SPRING HINGE TEMPLATE

DA
6" x 4 1/2"

For 1-3/4" (44.4)
Thick Doors



NOTE:

- 1 screw pack includes all machine screws (28), and 1/2 wood screws (14). ATMS & AWS also available.
- Screw size: FHMS - 12-24 x 1/2"
FHWS - 12 x 1 1/2"
- DO NOT USE ON DOORS WITH HINGE EDGE BEVELED.
- All hinges are ANSI template.

PBB, Inc.
World Class Hinges

1311 E. Philadelphia Street • Ontario • CA 91761 • USA
PBB reserves the right to make changes without notice.

CONTINUED...

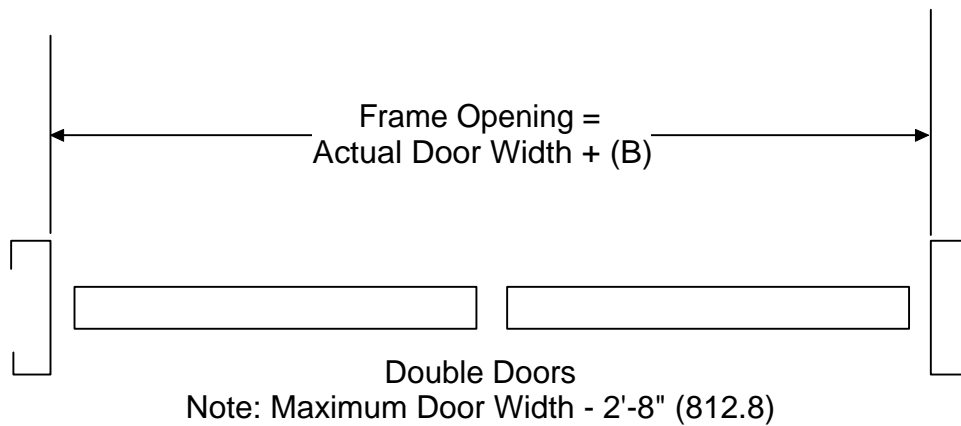
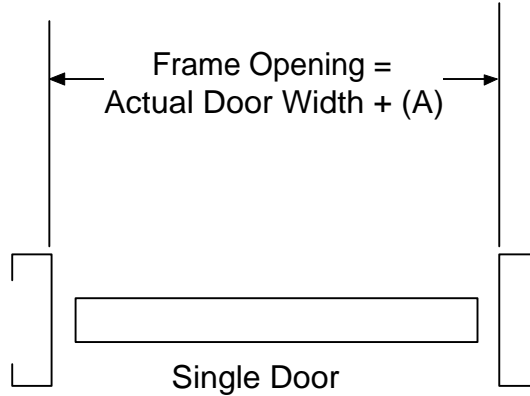
Template: DA8145



FULL MORTISE DOUBLE ACTING SPRING HINGE TEMPLATE

DA

6" x 4 1/2"



NOTES:

1. This hinge is not to be used on doors with hinge edge beveled.
2. Refer to catalog for door weight and hinge size.
3. Hinges should be inverted on one door of a pair for proper centering.

Frame Clearance		
Hinge Mounting	Clearance (A)	Clearance (B)
Surface Applied	---	---
Door Flange Mortised	.407 (10.34)	.814 (20.68)