

ARCHITECTURAL

List Price Book April 1, 2022

**World Class
Hinges**

**Door Hanging
Products**

**Architectural
Hardware**



1311 E. PHILADELPHIA STREET, ONTARIO, CALIFORNIA 91761
www.pbbinc.com (800) 726-3414 sales@pbbinc.com
Los Angeles Atlanta Kansas City

PBB Model Number Guide

First Two/Four Characters Denotes Style/Function of Hinge:

2B	2 Knuckle Ball Bearing	IF	3/16" Slip-In Insert
2H	2 Knuckle Ball Bearing Heavy Weight	PH	Concealed Bearing Heavy Weight Prison Hinge
2P	2 Knuckle Plain Bearing	RB	Raised Barrel
4B	4 Ball Bearing Heavy Weight	RS	Residential Spring Hinge
4C	Concealed Bearing Heavy Weight	RP	Residential Plain Bearing
4F	5 Knuckle Concealed Heavy Weight	SP	Spring Hinge
PB	5 Knuckle Plain Bearing	SC4B	Swing Clear Heavy Weight
BB	5 Knuckle Ball Bearing	SCPB	Swing Clear Plain Bearing
CP	3 Knuckle Concealed Plain Bearing	SCBB	Swing Clear Ball Bearing
CB	3 Knuckle Concealed Bearing	WT4B	Wide Throw Heavy Weight
CH	Continuous Heavy Weight	WTPB	Wide Throw Plain Bearing
FB	5 Knuckle Concealed Bearing	WTBB	Wide Throw Ball Bearing
IT	5/16" Slip-In Insert	WB	Welding Bull

Third/Fifth Character Based Material Used:

8	Wrought Steel
5	Stainless Steel
3	Aluminum
2	Wrought Brass

Fourth/Sixth Character Type of Hinge:

1	Full Mortise
2	Half Mortise
3	Full Surface
4	Half Surface

Example: **BB** **8** **1** = Ball Bearing, 5 Knuckle, Steel Based, Full Mortise

Pricing Column Finish Guide

On Steel:	Powder Coat	800 Black, 695 Dark Bronze
	Satin others	633, 639, 646
	Antique	638, 640, 641, 647
	Bright	632, 645, 651

On Stainless:	Powder Coat	800 Black Others by request

On Brass:	Powder Coat	800 Black Others by request
	Satin others	606, 612, 619
	Antique	609, 613, 620
	Bright	605, 618, 625

New Products *See page 5 for pricing*

Storefront Hinges



Gravity Pivot



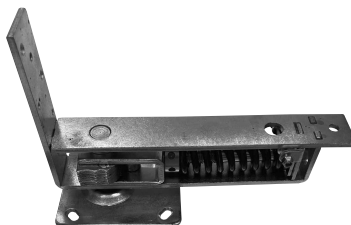
Barn Door Track System



Screen Door Spring Hinges



Horizontal Floor Springs



Armored Door Loop—Stainless Steel



Steel Based Hinges

Prime Coat Powder Coat Satin Chrome Satin Nickel Satin Others Antique Finishes Bright Finishes

Five Knuckle, Standard Weight, Full Mortise



Ball Bearing / Concealed Bearing

BB81 4545 / 4540	6.95	7.95	7.75	8.50	9.75	13.15	13.15
BB81 4040	7.00	7.55	8.00	8.55	9.05	12.00	12.00
BB81 3535	7.30	7.65	8.40	8.45	9.00	11.00	11.00
BB81 5050 / 5045 / 5040	12.80	13.60	15.85		13.65	18.50	18.50
BB81 6060 / 6050 / 6045	42.00	44.50	48.50		50.00	50.50	52.00

Plain Bearing

PB81 4545 / 4540	6.50	6.80	5.75	5.85	7.45	7.95	7.95
PB81 4040	5.00	5.25	6.85	6.85	7.15	7.80	7.80
PB81 3535	3.75	3.95	4.25	4.25	4.75	6.95	6.95
PB81 3030	2.95	3.30	4.30		4.50	6.00	6.00
PB81 5050 / 5045 / 5040	9.30	9.50	12.25		12.55	14.00	14.00

For 3 Knuckle hinges (CP/CB prefix) add \$1.00 list

For 2 Knuckle hinges (2P/2B prefix) add \$2.00 list



Heavy Weight Four Bearing/Concealed Bearing



4B81 4545 / 4540	19.30	21.50	21.80		22.50	25.25	25.50
4B81 5050 / 5045 / 5040	22.00	24.00	24.50		24.90	28.00	28.00
4B81 6060 / 6050 / 6045	80.00	84.50	86.00		94.00	97.00	97.00
4B81 8080 / 8060 / 8045	125.00	130.00	136.00		140.00	147.00	147.00

For 3 Knuckle hinges (4C prefix) add \$2.00 list

For 2 Knuckle hinges (2H prefix) add \$3.00 list



Spring Hinges



SP81 4545 / 4540	15.00	20.10	17.00	17.50	22.00	26.00	26.00
SP81 4040	15.50	16.00	16.90	17.40	22.15	24.00	24.00
RS81 4040 / 3535	11.00	11.50	15.00	15.00	15.25	15.60	15.60

Steel Based Hinges

Prime Coat Powder Coat Satin Chrome Satin Others Antique Finishes Bright Finishes

Swing Clear



Swing Clear-Standard Weight Ball Bearing

SCBB81 45 / 50	51.70	53.30	54.60	55.90	58.00	58.00
SCPB81 40 / 35	22.30	23.95	25.40	27.00	29.70	29.70

Swing Clear-Heavy Weight Four Bearing

SC4B81 45 / 50	61.00	62.50	64.40	67.00	71.00	71.00
----------------	-------	-------	-------	-------	-------	-------

Wide Throw



Wide Throw-Standard Weight Ball Bearing

WTBB81 4550 - 4580	18.90	22.95	23.95	24.95	29.75	29.95
WTBB81 4045 - 4070	12.65	14.50	15.40	16.40	19.95	19.95
WTBB81 3540 - 3560	12.65	14.50	15.40	16.40	19.95	19.95
WTBB81 5060 - 5080	22.70	25.00	27.50	29.00	35.75	35.75

Wide Throw-Standard Weight Plain Bearing

WTPB81 4550 - 4580	16.80	19.80	20.35	21.35	26.40	26.40
WTPB81 4045 - 4070	11.30	13.00	13.70	14.70	17.70	17.70
WTPB81 3540 - 3560	11.30	13.00	13.70	14.70	17.70	17.70
WTPB81 5060 - 5080	18.55	20.35	22.40	23.40	29.00	29.00

Wide Throw-Heavy Weight Four Bearing

WT4B81 4550 - 4580	29.00	31.20	32.10	33.10	38.25	38.25
WT4B81 5060 - 5080	32.30	34.10	35.60	36.60	42.45	42.45

Half Mortise, Half Surface and Full Surface

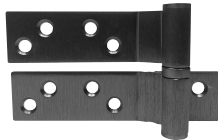


Standard Weight Ball Bearing

BB82 / BB83 / BB84 45	25.80	27.55	30.65	31.65	38.70	38.70
-----------------------	-------	-------	-------	-------	-------	-------

Heavy Weight Four Bearing

4B82 / 4B83 / 4B84 45	30.55	32.00	33.60	34.50	41.00	41.00
BB85 Reinforcing pivot	25.00		26.00	29.00 (640 only)		



Residential Hinges



RP814040	2.10	2.80	3.50	3.50	4.45	4.45
RP813535	1.85	2.40	3.00	3.00	3.70	3.70

"Bommer" Type Hinges & Pivots

Gravity Pivot

ORDER NOW!



	603 Zinc Plated	Metallic Painted
B7512	40.00	44.00
B7512H	43.00	47.00

Similar to Bommer 7512

Available 2nd Quarter

Single & Double Acting Hinges



	Prime Coat	Satin Chrome
DA816045	86.00	90.00
SA8160	45.00	50.00
SA8170	55.00	
SA816045	50.00	56.00

Similar to Bommer 3029 – 6" x 4.5"
4010 / 4020 / 4040

AVAILABLE NOW!

Screen Door Spring Hinges

ORDER NOW!



	601 (Zinc Plated)	Metallic Painted*	L x W	Similar Bommer #
B2920 Adjustable Spring	10.60	11.20	3" x 2.75"	2920
B2960 Fixed Spring	5.50	6.05	3" x 2.75"	2960

*BL-Black, SC-Satin Chrome, SN-Satin Nickel, SB-Satin Brass, DB-Dark Bronze

Available 2nd Quarter

Horizontal Floor Springs

ORDER NOW!



	630 (Stainless Steel)	646 (Satin Nickel)	Metallic Painted*	Similar Bommer#
B7811 (Hold open)	85.00	115.00	105.00	7811
B7813	80.00	110.00	100.00	7813
Jamb Bracket (Suffix - JB)			15.00	7812 / 7814

*BL-Black, SB-Satin Brass, DB-Dark Bronze

Available 2nd Quarter

New Products

ORDER NOW!

Storefront Hinges



	630	Powder Coat
BB514540(finish)NR2	26.50	26.50

Stainless Steel, Ball Bearing, 5/32" radius corner, non-removable pin, 4 1/2" x 4"

Satin Stainless (630), Dark Bronze Powder Coat (810) or Black Powder Coat (800)

AVAILABLE NOW!

Armored Door Loop – Stainless Steel

HD Cast End Caps, 17" Overall



	Zinc	Painted Finishes
DL-HD	20.00	30.00

BL-Black, SB-Satin Brass, DB-Dark Bronze (End caps only)

Available 2nd Quarter

Stainless Steel Based Hinges

Prime
Coat

630 Satin
Stainless

629 Bright
Stainless

Five Knuckle, Standard Weight, Full Mortise



Ball Bearing

BB51 4545 / 4540	34.20	25.00	34.20
BB51 4040	31.00	28.20	31.00
BB51 3535	27.00	25.10	27.00
BB51 5050 / 5045 / 5040	41.90	38.00	41.90
BB51 6060 / 6050 / 6045	60.25	54.25	60.25

Plain Bearing

PB51 4545 / 4540	27.40	24.70	27.40
PB51 4040	25.65	23.25	25.65
PB51 3535	22.40	20.30	22.40
PB51 3030		19.35	
PB51 5050 / 5045 / 5040	38.10	34.60	38.10

For 3 Knuckle hinges (CP/CB prefix) add \$2.00 list

For 2 Knuckle hinges (2P/2B prefix) add \$3.00 list



Heavy Weight Four Bearing



4B51 4545 / 4540	51.50	46.75	51.50
4B51 5050 / 5045 / 5040	57.60	52.40	57.60
4B51 6060 / 6050 / 6045	117.00	106.00	117.00

For 3 Knuckle hinges (4C prefix) add \$4.00 list

For 2 Knuckle hinges (2H prefix) add \$5.00 list



Spring Hinges



SP51 4545 / 4540	61.50	59.65	61.90
SP51 4040	55.20	54.70	55.80
RS51 4040 / 3535		52.60	

Stainless Steel Based Hinges

630 Satin
Stainless

Half Mortise, Half Surface and Full Surface Hinges



BB52 / BB53 / BB54 45	111.00
BB55 (Reinforcing Pivot)	55.00



Specialty Hinges 630



PH51 4545 Prison Hinge	113.00
PH51 5045 Prison Hinge	150.00
LE51 5045 Cam Lift Hinge	136.00

Swing Clear



Swing Clear-Standard Weight Ball Bearing

SCBB 5145	107.00
SCBB 5150	122.75

Swing Clear-Heavy Weight Four Bearing

SC4B 5145	122.50
SC4B 5150	131.00

Wide Throw



Wide Throw-Standard Weight Ball Bearing

WTBB51 4550 - 4580	44.80
WTBB51 4045 - 4070	42.15
WTBB51 3540 - 3560	42.15
WTBB51 5060 - 5080	50.50

Wide Throw-Standard Weight Plain Bearing

WTPB51 4550 - 4580	39.15
WTPB51 4045 - 4070	26.90
WTPB51 3540 - 3560	26.90
WTPB51 5060 - 5080	44.10

Wide Throw-Heavy Weight Four Bearing

WT4B51 4550 - 4580	63.90
WT4B51 5060 - 5080	80.60

Brass Based Hinges

Prime Coat Powder Coat Satin Chrome Satin Others Antique Finishes Bright Finishes

5 Knuckle Standard Weight, Full Mortise



Ball Bearing

BB21 4545 / 4540	38.40	39.70	40.50	41.25	41.25	43.30
BB21 4040	33.35	33.85	34.55	35.10	35.10	38.00
BB21 3535	29.35	30.00	30.60	31.50	31.50	34.00
BB21 5050 / 5045 / 5040	45.50	46.50	47.25	48.15	48.15	49.80

Plain Bearing

PB21 4545 / 4540	36.40	37.00	37.70	38.00	39.40	41.60
PB21 4040	31.70	32.90	33.25	33.90	34.40	36.60
PB21 3535	28.00	28.60	29.50	31.00	31.80	33.40
PB21 3030	13.75	13.90	14.40	14.95	15.40	16.90
PB21 5050 / 5045 / 5040	44.00	45.00	46.00	47.00	48.00	50.00

Heavy Weight-Four Bearing

4B21 4545	48.00	48.90	49.80	51.90	53.00	53.90
4B21 5050	52.90	53.35	54.65	55.20	56.00	59.50

Residential Hinges

RP21 4040	18.00	18.50	19.00	19.50	19.50	19.85
RP21 3535	14.80	15.25	15.60	15.90	15.90	17.25



Barn Door Track System

304 Stainless Steel, 79" or 99" length, Soft Close

Part

BD5A79630 (79") \$380.00

BD5A99630 (99") \$400.00



Available 2nd Quarter

Looking for Custom Hinges?

Special Templating?

OEM?

Private Label?

Call us!

1-800-726-3414

or

sales@pbbinc.com

Continuous Hinges

Stainless Steel Pin/Barrel

	83"	85"	95"	119"
CH51 630 Edge Mount	375.00	420.00	480.00	600.00
CH51G 630 Full Door Guard	600.00	655.00	735.00	905.00
CH51L Single Door Guard	575.00	605.00	680.00	840.00
CH52 Half Mortise	690.00	845.00	860.00	990.00
CH53 Full Surface	750.00	840.00	855.00	1135.00
CH51P Extra Heavy Duty	520.00	550.00	590.00	750.00

Aluminum Geared Hinges

(All HD - Heavy Duty)	83 / 85"		95"		119"	
	AL	DKB	AL	DKB	AL	DKB
CG31	158.00	206.00	208.00	267.00	326.00	425.00
CG31L	165.00	208.00	219.00	274.00	328.00	416.00
CG31P	185.00	238.00	236.00	300.00	367.00	465.00
CG31I	169.00	211.00	219.00	277.00	328.00	425.00
CG31PN	195.00	250.00	245.00	315.00	385.00	500.00
CG31CL	289.00	388.00	388.00	492.00	593.00	617.00
CG33N	236.00	279.00	291.00	361.00	517.00	575.00
CG33C	236.00	279.00	291.00	361.00	517.00	575.00
CG34	245.00	311.00	304.00	383.00	492.00	468.00
CG34N	237.00	311.00	297.00	380.00	480.00	482.00

Please contact customer service for electrical modifications, special finishes, custom cutting charges, special tips, etc.
1-800-726-3414 or sales@pbbinc.com

Net adds to Butt Hinges:

	Price	Notes:
Round corner, NRP	0.40	BB / CB / PB / C / 4B / 4C have same price
Hospital tip, std wt	0.40	
Hospital tip, heavy wt	2.25	
Security stud	3.25	
E2, E4, E24, E6	75.00	
E8, E10	90.00	
E10	110.00	
EM	55.00	
R - Raised Barrel (BB8R)	8.55	

Please contact customer service for electrical modifications, special finishes, custom cutting charges, special tips, etc.
1-800-726-3414 or sales@pbbinc.com

Comparative Finish Symbols

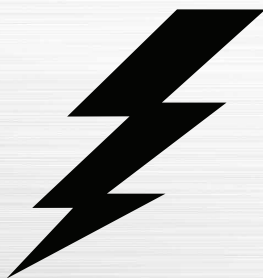
			B.H.M.A. Finish Code BASE MATERIAL									
U.S.	DESCRIPTION	PBB	Steel	Brass	Bronze	Stainless	Alum.	Hager	McKinney	Bommer	Stanley	
USP	Primed for Painting	600	600	-	-	-	-	USP	P	USP	USP	
US1D	Dull Black	800	-	-	-	-	-	US1D	10	-	US1D	
US2C	Zinc Plated, Commercial	602	602	-	-	-	-	US2C	2C	-	US2C	
US2G	Zinc Plated, Government	-	603	-	-	-	-	US2G	2G	US2G	US2G	
US3	Bright Brass	632	632	605	-	-	-	US3	3	US3	US3	
US4	Dull Brass	633	633	606	-	-	-	US4	4	US4	US4	
US5	Dull Brass, Oxidized	638	638	609	-	-	-	US5	5	US5	-	
US7	Brass, Nickel, Oxidized	636	636	610	-	-	-	US7	7	US7	-	
US9	Bright Bronze	637	637	-	611	-	-	US9	9	US9	-	
US10	Dull Bronze	639	639	-	612	-	-	US10	10	US10	-	
US10B	Antique Bronze, Oiled	613	-	-	613	-	-	US10B	10B	US10B	US10B	
US10B	Dark Antique Bronze/Oiled	813	640	-	613	-	-	-	-	-	-	
US10A	Antique Bronze, Lacquered	641	641	-	-	-	-	-	-	-	-	
US11	Dull Bronze, Oxidized	-	643	-	616	-	-	-	-	US11	-	
US14	Bright Nickel Plated	645	645	618	618	-	-	US14	14	US14	US14	
US15	Dull Nickel Plated	646	646	619	619	-	-	US15	-	US15	US15	
US15A	Nickel Oxidized Relieved	647	647	620	620	-	-	US15A	-	US15A	-	
US17A	Nickel Plated, Biked, Relv	648	648	621	621	-	-	-	-	US17A	US17A	
US20	Statuary Bronze, Light	-	649	-	623	-	-	US20	20	-	US20	
US20A	Statuary Bronze, Dark	-	650	-	624	-	-	US20A	20A	US20A	US20A	
US26	Bright Chromium	651	651	625	625	-	-	US26	26	US-26	US26	
US26D	Dull Chromium	652	652	626	626	-	-	US-26D	260	US-26D	US-26D	
US28	Anodized Dull Aluminum	628	-	-	-	-	628	US28	Clear	628	US28	
US32	Polished Stainless Steel	629	-	-	-	629	-	US32	32	US32	US32	
US32D	Dull Stainless Steel	630	-	-	-	630	-	US32D	32D	US32D	US32D	
	Gray Enamel	-	-	-	-	-	-	-	GY	-	-	
	Aluminum Lacquer	689	-	-	-	-	-	LS	LT	FL2	LA	
	Zinc Plated-Buffered Bright	-	-	-	-	-	-	2CB	-	-	KL	
	Zinc Plated-Dull	-	-	-	-	-	-	2CD	2CD	-	KD	
	Black Nickel	-	-	-	-	-	-	14B	B14	-	-	
	CO-Lacquer, Light	-	-	-	-	-	-	-	-	-	DL	
	CO-Lacquer, Medium	694	-	-	-	-	-	L3	-	FE3	OM	
	CO-Lacquer, Dark	695	-	-	-	-	-	L2	-	-	DD	
	CO-Lacquer, Black	-	-	-	-	-	-	L1	-	-	-	
	Anodized, Dark Aluminum	710	-	-	-	-	-	BRZ	Bronze	393	-	
	Brown Lacquer	808	-	-	-	-	-	-	-	-	-	
	D. Brz, Powder Coat	810	-	-	-	-	-	-	-	-	-	
	Off-White	830	-	-	-	-	-	14P	-	-	DW	
	Off-White, Powder Coat	831	-	-	-	-	-	-	-	-	-	
	Dull Gold	887	-	-	-	-	-	-	-	-	-	
	Bright Gold	888	-	-	-	-	-	-	-	-	-	

Butt Hinge Cross Reference

PBB #	McK / MacPro	Hager / Ecco	Stanley	Bommer	Type	Material	Mounting
BB81	TA2714 / MPB79	BB1279 / ECBB1100	FBB179	BB5000	Ball Bearing	Steel	Full Mortise
BB51	TA2314	BB1191	FBB191	BB5002	Ball Bearing	Stainless	Full Mortise
BB21	TA2314	BB1191	FBB191	BB5001	Ball Bearing	Brass	Full Mortise
PB81	T2714 / MP79	1279 / EC1100	F179	5000	Plain Bearing	Steel	Full Mortise
SP81	1502 / MPS60	1250 / EC1105	2060	LB4310C	Spring Hinge	Steel	Full Mortise
SP51						Stainless	Full Mortise
4B81	T4A3786	BB1168	FBB168	BB5004	HW Ball Bearing	Steel	Full Mortise
4B51	T4A3386	BB1199	FBB199	BB5006	HW Ball Bearing	Stainless	Full Mortise
BB82	TB2774	BB1129	FBB167	BB5100	Ball Bearing	Steel	Half Mortise
BB84	TB2772	BB1173	FBB173	BB5300	Ball Bearing	Steel	Half Surface
BB83	TB2771	BB2171	FBB171	BB5200	Ball Bearing	Steel	Full Surface

Continuous Hinge Cross Reference

PBB	ROTON	PEMKO	SELECT	STANLEY	ABH	IVES
CG31	780-112HD	FMSLFHD	SLIHD	661HD	A110HD	112HD
CG311	780-111HD	FMSLIHD	SL18HD		A11HD	
CG33C	780-210HD	FSHD	SL21HD	665HD	A210HD	210HD
CG31L	780-224HD	FMHD	SL24HD	662HD	A240HD	224HD
CG31PN			SL26HD			
CG31P	780-226HD	FMSLFHD	SL27HD		A270HD	
CG31CL	780-041HD	OSFMHD	SL41HD		A410HD	
CG34N	780-053HD		SL53HD		A530HD	053HD
CG34	780-054HD	HSHD	SL54HD	663HD	A540HD	054HD
CG33N	780-157HD	FSCPHD	SL54HD	664HD	A570HD	157HD



***Looking for Electrified Hinges?
Check out our full stock of
2, 4, 6, 8 & 10 Wire Hinges***

Terms

General Terms: Prices and terms subject to change without notice. Errors and omissions subject to correction. If, under any law now or hereafter passed, the seller is required to pay a tax on sales or an excise tax, the amount of these taxes will be added to the invoice value. We will not be responsible for delayed deliveries caused by fire, flood, strikes, government regulations, transportation, or other circumstances beyond our control.

Payment Terms: 1%/10 Net 30 Days. Delinquent accounts are subject to 1½% per month interest charge. Accounts delinquent more than 60 days will be subject to a C.O.D. shipment. Accounts delinquent more than 90 days will be turned over to collection agency.

Shipment Terms: Freight prepaid on shipments having a net value of \$1,200.00 or more, continental limits, USA. All parcel post, air freight or express shipments are FOB warehouse without freight allowance. Goods in transit at risk of purchaser.

Other Terms: A service charge of \$10.00 will be charged for any order less than \$50.00 net. A fee of \$50.00 will be charged when we are requested to itemize and/or special package in accordance with schedules. Any changes on orders confirmed will be subject to a service fee of \$25.00.

Cancellations: All orders accepted by us are noncancellable except with our written consent and then subject to a service charge expressed in such consent.

Returned Goods: No credit will be issued for returned goods unless such return is authorized in writing by our office. If goods are authorized for return, there will be a minimum handling charge of 30%. PBB will not be responsible for freight charges on customer orders placed incorrectly.

World Class Hinges

Door Hanging Products

Architectural Hardware



ARCHITECTURAL

1311 E. PHILADELPHIA STREET, ONTARIO, CALIFORNIA 91761

www.pbbinc.com (800) 726-3414 sales@pbbinc.com

Los Angeles Atlanta Kansas City